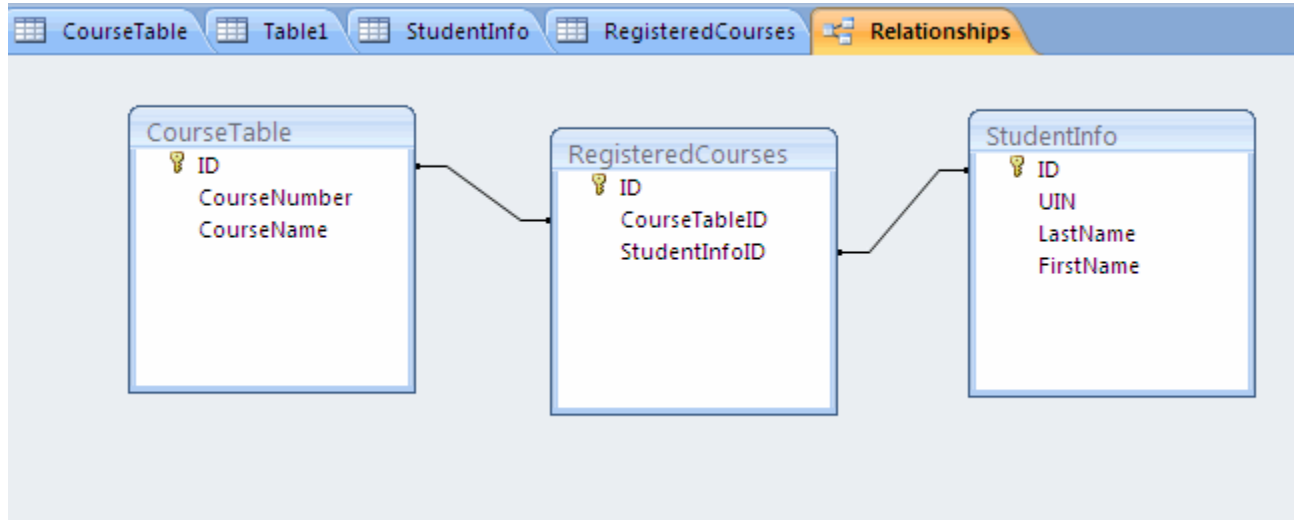


## Table Relationships

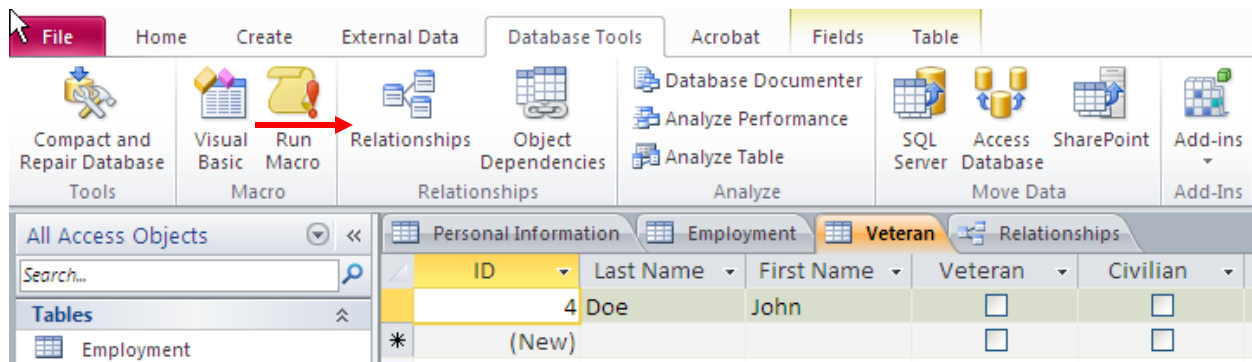
Table relationships are the associations of data between tables. By defining table relationships, you can pull records from related tables based on matching fields.



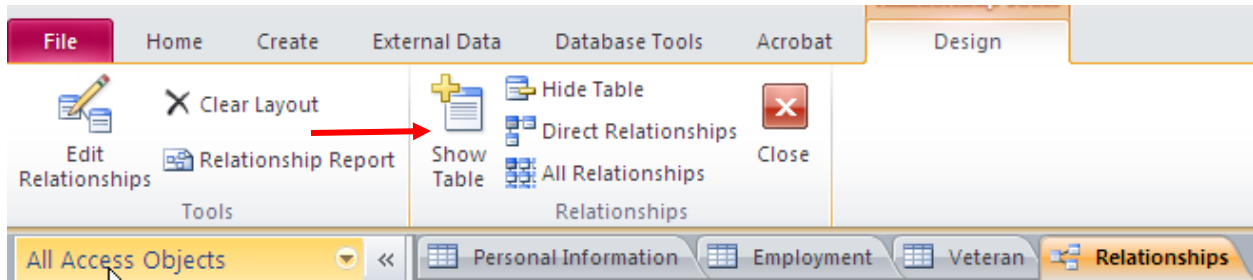
### Creating Table Relationships

To create relationships between tables:

- Click the **Database Tools** tab on the Ribbon
- Click the **Relationships** button

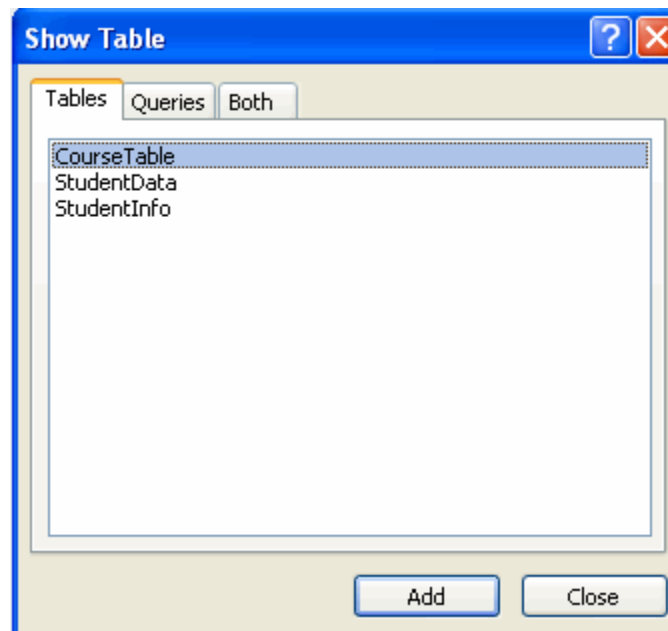


- Click on the **Design** tab
- Click **Show Table**



Select the desired tables

- Click **Add**
- Click **Close**



- Click the field you wish to create a relationship from
- Drag it to the matching field in the other table
- Click **Create**

