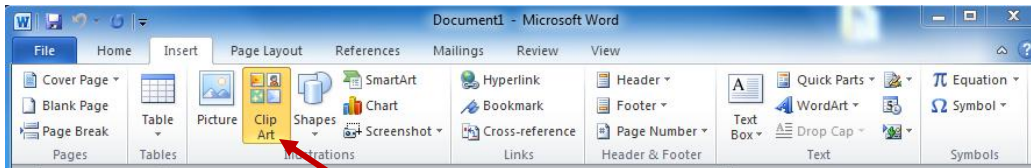


Illustrations, Pictures, and SmartArt

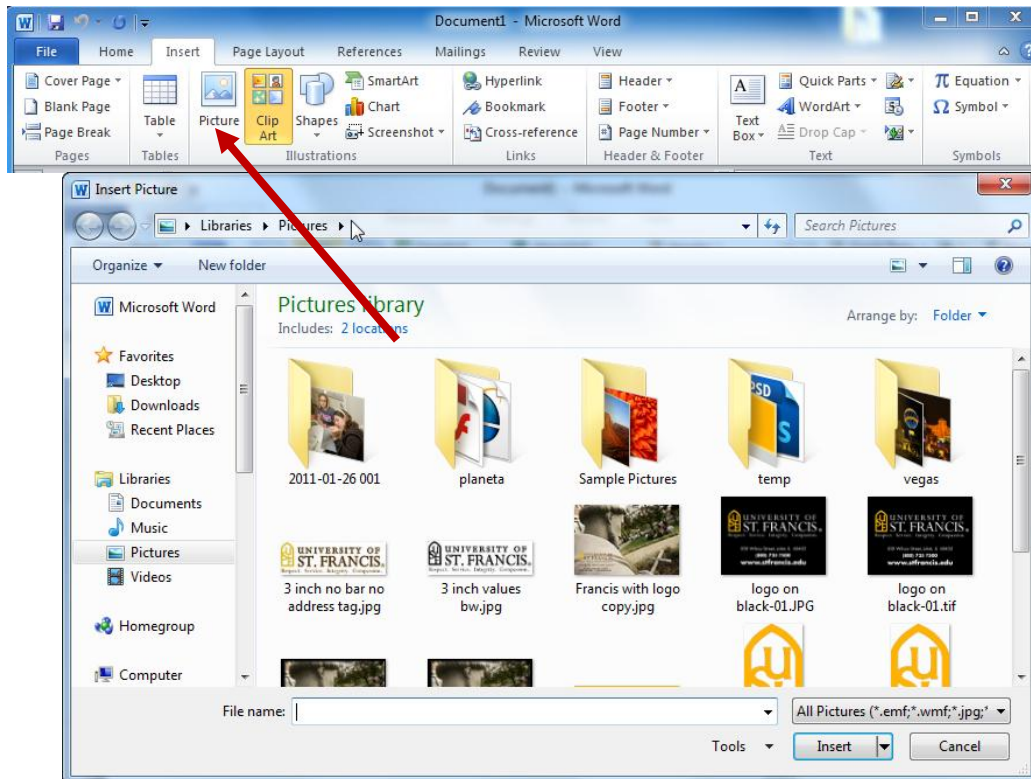
To insert **illustrations**:

- Place your cursor in the document where you want the illustration/picture
- Click the **Insert** Tab on the Ribbon
- Click the **Clip Art** Button
- The dialog box will open on the screen and you can search for clip art.
- Choose the illustration you wish to include



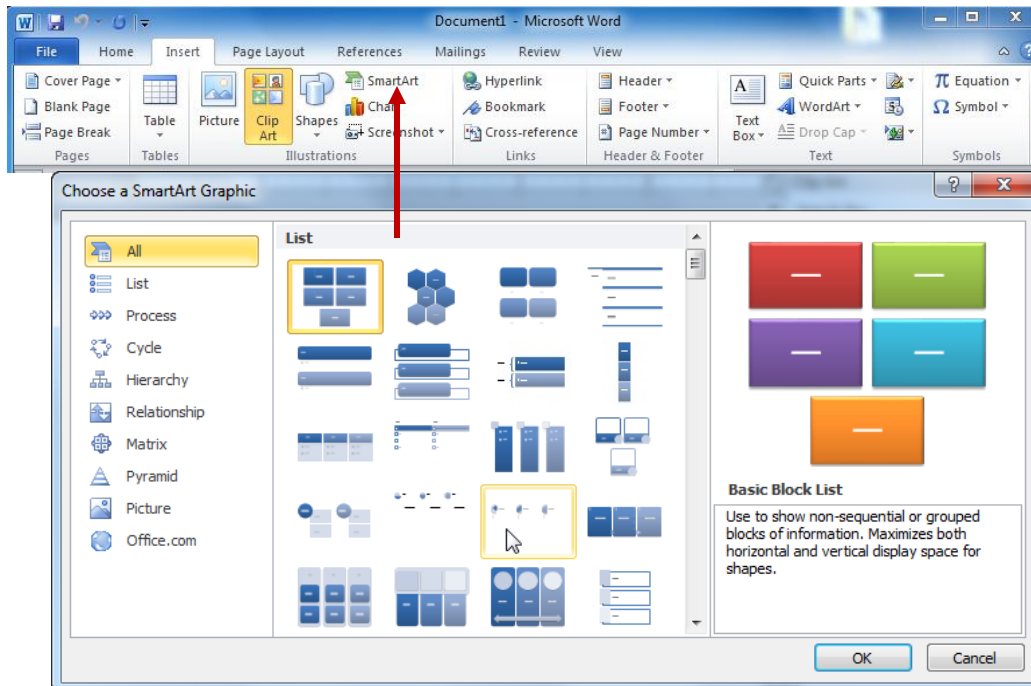
To insert a **picture**:

- Place your cursor in the document where you want the illustration/picture
- Click the **Insert** Tab on the Ribbon
- Click the **Picture** Button
- Browse to the picture you wish to include
- Click the **Picture**
- Click **Insert**



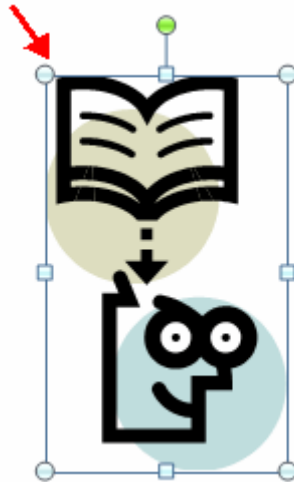
Smart Art is a collection of graphics you can utilize to organize information within your document. It includes timelines, processes, or workflow. To insert SmartArt

- Place your cursor in the document where you want the illustration/picture
- Click the **Insert** Tab on the Ribbon
- Click the **SmartArt** button
- Click the **SmartArt** you wish to include in your document
- Click the arrow on the left side of the graphic to insert text or type the text in the graphic.



Resize Graphics

All graphics can be resized by clicking the image and clicking one corner of the image and dragging the cursor to the size you want the picture.



Watermarks

A watermark is a translucent image that appears behind the primary text in a document. To insert a watermark:

- Click the **Page Layout** Tab in the Ribbon
- Click the **Watermark** Button in the Page Background Group
- Click the **Watermark** you want for the document or click **Custom Watermark** and create your own watermark
- To remove a watermark, follow the steps above, but click **Remove Watermark**

